

Gorchymyn Cyngor Sir Dinas a Sir Caerdydd (Gwaharddiadau a Chyfyngiadau Stopio, Aros, Llwytho a Mannau Parcio ar y Stryd) (Cydgrynhoi) 2024 Gorchymyn (Diwygio Rhif 10) 2024

Mae Cyngor Sir Dinas a Sir Caerdydd, wrth arfer ei bwerau dan Adrannau 1 a 2 Deddf Rheoliadau Traffig Ffyrdd 1984, Rhan 6 Deddf Rheoli Traffig 2004 fel y'i diwygiwyd, Rheoliadau Gorfodi Sifil ar Dramgwyddau Traffig Ffyrdd (Darpariaethau Cyffredinol) (Cymru) 2013, Gorchymyn Dynodi Gorfodi Sifil ar Dramgwyddau Parcio (Dinas a Sir Caerdydd) 2010 a'r holl bwerau galluogi eraill, yn cynnig gwneud Gorchymyn a fydd yn diwygio'r gorchymyn a enwir uchod ac yn benodol y cyfeirnodau teils map R36 a S36 (wedi'i atodi i'r Gorchymyn drafft) a fydd yn eich atal rhag:

- i. aros ar unrhyw adeg ar hyd y darnau o ffordd a nodir yn Atodlen 1 isod;
- ii. aros rhwng 8.00am a 9.00am na rhwng 2.30pm a 4.00pm (dydd Llun i ddydd Gwener) ar hyd y darnau o ffordd a nodir yn Atodlen 2 isod;
- iii. aros ar unrhyw adeg ar hyd y darnau o ffordd a nodir yn Atodlen 3 isod; a
- iv. aros rhwng 8.00am a 4.30pm (dydd Llun i ddydd Gwener) ar hyd y darnau o ffordd a nodir yn Atodlen 4 isod;

Caniateir eithriadau ar gyfer y darnau o ffordd a nodir yn Atodlen 1 am y rhesymau canlynol:-

- a) mynd i mewn ac allan o gerbyd
- b) llwytho a dadlwytho nwyddau rhwng 09:01 a 14:29 a rhwng 16:01 a 07:59 (dros nos) o ddydd Llun i ddydd Gwener ac ar unrhyw adeg ar ddydd Sadwrn neu ddydd Sul.
- c) gwasanaethau hanfodol ac angladdau
- d) am gyfnod o hyd at dair awr, cerbydau sy'n arddangos "Bathodyn i Bobl Anabl" ac sy'n cael eu defnyddio i gludo pobl anabl rhwng 09:01 a 14:29 a rhwng 16:01 a 07:79 (dros nos) o ddydd Llun i ddydd Gwener ac ar unrhyw adeg ar ddydd Sadwrn neu ddydd Sul.

Caniateir eithriadau ar gyfer y darnau o ffordd a nodir yn Atodlen 2 am y rhesymau canlynol:-

- a) mynd i mewn ac allan o gerbyd
- b) gwasanaethau hanfodol ac angladdau

Caniateir eithriadau ar gyfer y darn o ffordd a nodir yn Atodlen 3 am y rhesymau canlynol:-

- a) mynd i mewn ac allan o gerbyd
- b) llwytho a dadlwytho nwyddau;
- c) gwasanaethau hanfodol ac angladdau
- d) cerbydau sy'n arddangos "Bathodyn Person Anabl" a ddefnyddir i gludo pobl anabl, am dair awr ar y mwyaf

Mae manylion y cynnig a'r cynllun sy'n dangos lleoliad a maint y chyfyngiadau arfaethedig ar gael yn www.caerdydd.gov.uk/gorchymyniontraffig neu drwy sganio'r cod QR isod. Yn ogystal, gallwch gael copïau drwy anfon cais ar e-bost i gwrthwynebiadaugorchymyntraffigffyrdd@caerdydd.gov.uk neu drwy anfon cais ysgrifenedig i'r cyfeiriad isod.

Rhaid anfon unrhyw wrthwynebiadau a sylwadau eraill sy'n ymwneud â'r gorchymyn yn ysgrifenedig erbyn 27 Mehefin 2024 neu dros e-bost i gwrthwynebiadaugorchymyntraffigffyrdd@caerdydd.gov.uk. Yn achos gwrthwynebiad, rhaid cynnwys datganiad yn nodi'r rhesymau dros wrthwynebu. Gellir datgelu gohebiaeth fel sy'n ofynnol dan Ddeddf Rhyddid Gwybodaeth 2000.

Gellir tynnu'r Hysbysiad hwn ar ôl i'r cyfnod gwrthwynebu ddod i ben. Mae'r Cyngor yn croesawu gohebiaeth yn Gymraeg ac yn Saesneg a byddwn yn sicrhau ein bod yn cyfathrebu â chi yn yr iaith o'ch dewis, boed hynny'n Gymraeg, yn Saesneg neu'n ddwyieithog, cyhyd â'ch bod yn dweud wrthym pa un sydd orau gennych. Ni fydd gohebu yn Gymraeg yn creu unrhyw oedi. Mae'r ddogfen hon ar gael yn Saesneg / This document is available in English.

Atodlen 1

Ferntree Drive

- a) ar ochr y gorllewin o'r gyffordd â Heol Greenway am 9 metr i'r de.
- b) ar ochr y dwyrain o'r gyffordd â Heol Greenway am 11 metr i'r de.
- c) ar ochr y dwyrain o'r gyffordd â Meadowlark Close am 34 metr i'r gogledd-orllewin.
- ch) ar ochr y dwyrain o'r gyffordd â Meadowlark Close am 5 metr i'r de.
- d) ar ochr y de o'r gyffordd â Oaklands Close am 8 metr i'r gogledd-ddwyrain

dd) ar ochr y de o'r gyffordd â Oaklands Close am 6 metr i'r gorllewin.

Heol Greenway

a) ar ochr y de o'r gyffordd â Ferntree Drive am 11 metr i'r de-orllewin.

b) ar ochr y de o'r gyffordd â Ferntree Drive am 12 metr i'r gogledd-ddwyrain.

Meadowlark Close

a) ar ochr y gogledd o'r gyffordd â Ferntree Drive am 36 metr i'r gogledd-ddwyrain

b) ar ochr y de o'r gyffordd â Ferntree Drive am 9 metr i'r dwyrain.

c) ar ochr y de o bwynt 32 metr i'r gogledd-ddwyrain o'r gyffordd â Ferntree Drive am 11 metr i'r gogledd.

Rhodfa Nant Helyg

a) ar ochr y gogledd-orllewin o bwynt 25 metr i'r de-orllewin o'r gyffordd â Ffordd Lloneirwg am 20 metr i'r de-orllewin

b) ar ochr y gogledd-orllewin o bwynt 112 metr i'r de-orllewin o'r gyffordd â Ffordd Lloneirwg am 28 metr i'r de.

c) ar ochr y de-ddwyrain o bwynt 25 metr i'r de-orllewin o bwynt gyferbyn â'r gyffordd â Ffordd Lloneirwg am 19 metr i'r de-orllewin.

ch) ar ochr y de-ddwyrain o bwynt 88 metr i'r de-orllewin o bwynt gyferbyn â'r gyffordd â Ffordd Lloneirwg am 58 metr i'r de-orllewin.

Atodlen 2

Ferntree Drive ar ochr y gorllewin o bwynt 9 metr i'r de o'r gyffordd â Heol Greenway am 201 metr i'r de.

Atodlen 3

Heol Greenway

a) ar ochr y de-ddwyrain o'r gyffordd â Ffordd Lloneirwg am 78 metr i'r de-orllewin.

b) ar ochr y gogledd-orllewin o'r gyffordd â Ffordd Lloneirwg am 138 metr i'r de-orllewin

Ffordd Lloneirwg

a) ar ochr y de-orllewin o'r gyffordd â Heol Greenway am 7 metr i'r de-ddwyrain.

b) ar ochr y de-orllewin o'r gyffordd â Heol Greenway am 4 metr i'r gogledd-orllewin.

Atodlen 4

Ferntree Drive ar ochr y dwyrain o bwynt 5 metr i'r de o'r gyffordd â Meadowlark Close am 26 metr i'r de

Dyddiad: 5 Mehefin 2024

Gwasanaethau Cyfreithiol, Neuadd y Sir, Glanfa'r Iwerydd, Caerdydd CF10 4UW

The County Council of The City and County of Cardiff (Prohibitions and Restrictions of Stopping, Waiting, Loading and Street Parking Places) (Consolidation) Order 2024 (Amendment No 10) Order 2024

The County Council of the City and County of Cardiff in exercise of its powers under Sections 1 and 2 of the Road Traffic Regulations Act 1984, Part 6 of the Traffic Management Act 2004 as amended, The Civil Enforcement of Road Traffic Contraventions (General Provisions) (Wales) Regulations 2013, The Civil Enforcement of Parking Contraventions (City and County of Cardiff) Designation Order 2010, and of all other enabling powers proposes making an Order the general effect of which will be to amend the above named order and in particular map tile references R36 & S36 (annexed to the draft Order) which will prevent you from:

- i. waiting at any time along the lengths of road set out in Schedule 1 below;
- ii. waiting between the hours of 8.00 a.m. to 9.00 a.m. and 14.30 p.m. to 16.00 p.m. (Monday to Friday) along the length of road set out in Schedule 2 below;
- iii. waiting at any time along the lengths of road set out in Schedule 3 below; &
- iv. stopping between the hours of 8.00 a.m. and 4.30 p.m. (Monday to Friday) along the length of road set out in Schedule 4 below.

Exemptions for the lengths of road set out in the Schedule 1 will be permitted for the following reasons:-

- a) boarding and alighting a vehicle
- b) loading and unloading of goods between the hours of 9:01 and 14.29 & 16:01 and 7:59 (overnight) Monday to Friday and at any time on a Saturday or Sunday
- c) essential services and funerals
- d) for a maximum period of three hours vehicles when displaying a "Disabled Badge" and being used for the conveyance of disabled persons between the hours of 9:01 and 14.29 & 16:01 and 7:59 (overnight) Monday to Friday and at any time on a Saturday or Sunday

Exemptions for the lengths of road set out in the Schedule 2 will be permitted for the following reasons:-

- a) boarding and alighting a vehicle
- b) essential services and funerals

Exemptions for the length of road set out in the Schedule 3 will be permitted for the following reasons:-

- a) boarding and alighting a vehicle
- b) loading and unloading of goods
- c) essential services and funerals
- d) for a maximum period of three hours vehicles when displaying a "Disabled Badge" and being used for the conveyance of disabled persons

Details of the proposal and plan showing the location and extent of the proposed restrictions are available at www.cardiff.gov.uk/trafficorders or by scanning the QR code below. In addition you can obtain copies of the same by sending an email request to roadtrafficorderobjections@cardiff.gov.uk or by making a written request to the address below.

Any objections and other representations relating to the order must be submitted in writing on or before 27th June 2024 or by email to roadtrafficorderobjections@cardiff.gov.uk. In the case of an objection this must contain a statement of the grounds on which the objection is made. Correspondence may be disclosed as required by the Freedom of Information Act 2000.

This Notice may be removed after the objection period ends. The Council welcomes correspondence in English and Welsh and we will ensure that we communicate with you in the language of your choice, whether that's English, Welsh or bilingual as long as you let us know which you prefer. Corresponding in Welsh will not lead to any delay. This document is available in Welsh/Mae'r ddogfen hon ar gael yn Gymraeg.

Schedule 1

Ferntree Drive

- a) on its west side from its junction with Greenway Road for a distance of 9 metres south.
- b) on its east side from its junction with Greenway Road for a distance of 11 metres south.
- c) on its east side from its junction with Meadowlark Close for a distance of 34 metres north-west.

- d) on its east side from its junction with Meadowlark Close for a distance of 5 metres south.
- e) on its south side from its junction with Oaklands Close for a distance of 8 metres north-east.
- f) on its south side from its junction with Oaklands Close for a distance of 6 metres west.

Greenway Road

- a) on its south side from its junction with Ferntree Drive for a distance of 11 metres south-west.
- b) on its south side from its junction with Ferntree for a distance of 12 metres north-east.

Meadowlark Close

- a) on its north side from its junction with Ferntree Drive for a distance of 36 metres north-east.
- b) on its south side from its junction with Ferntree Drive for a distance of 9 metres east.
- c) on its south side from a point 32 metres northeast of its junction with Ferntree Drive for a distance of 11 metres north.

Willowbrook Drive

- a) on its north-west side from a point 25 metres southwest of its junction with Llanewrwg Way for a distance of 20 metres south-west.
- b) on its north-west side from a point 112 metres southwest of its junction with Llanewrwg Way for a distance of 28 metres south.
- c) on its south-east side from a point 25 metres southwest of a point opposite its junction with Llanewrwg Way for a distance of 19 metres south-west.
- d) on its south-east side from a point 88 metres southwest of a point opposite its junction with Llanewrwg Way for a distance of 58 metres south-west.

Schedule 2

Ferntree Drive on its west side from a point 9 metres south of its junction with Greenway Road for a distance of 201 metres south.

Schedule 3

Greenway Road

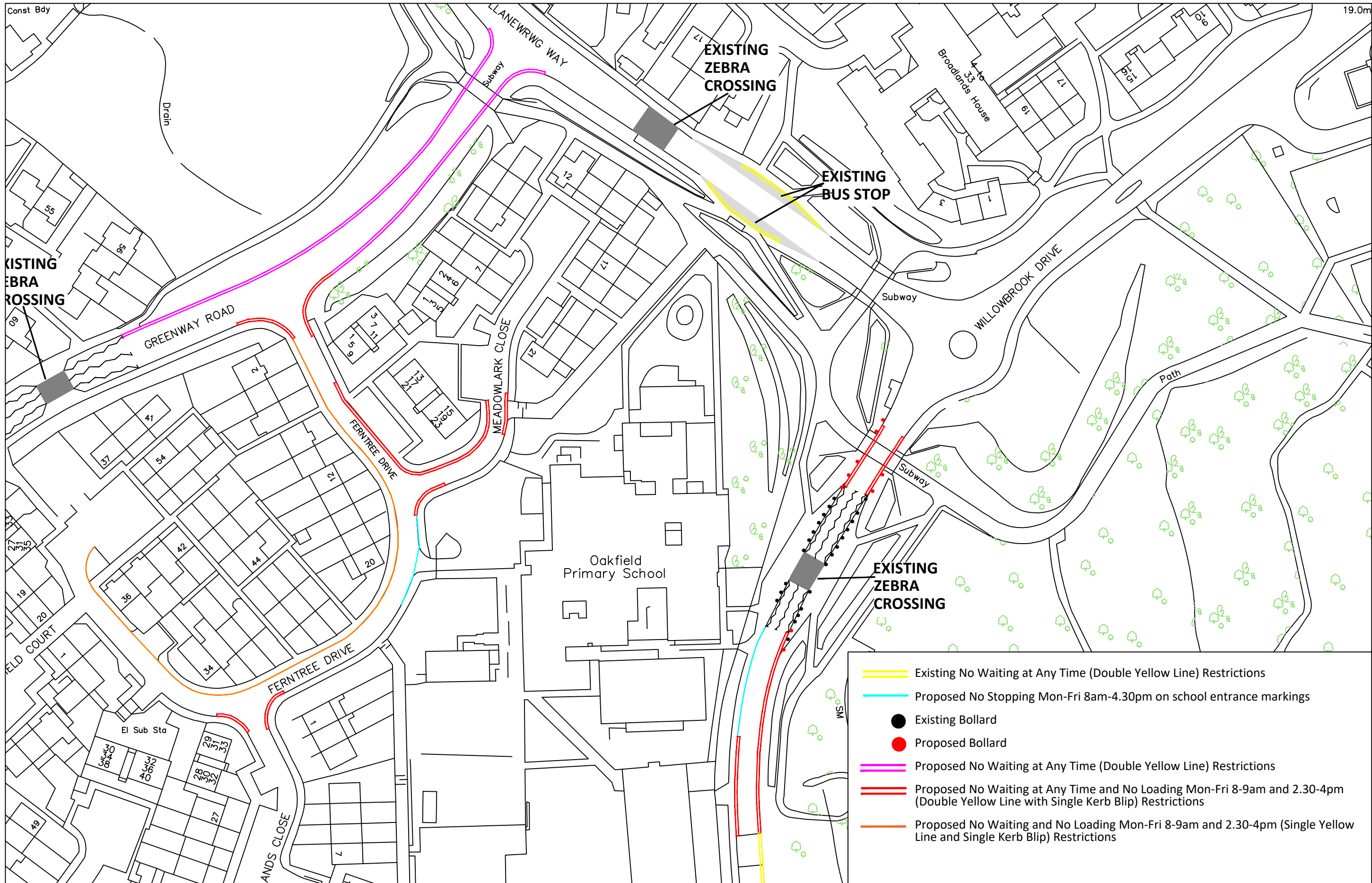
- a) on its south-east side from its junction with Llanewrwg Way for a distance of 78 metres south-west.
- b) on its north-west side from its junction with Llanewrwg Way for a distance of 138 metres south-west.

Llanewrwg Way

- a) on its south-west side from its junction with Greenway Road for a distance of 7 metres south-east.
- b) on its south-west side from its junction with Greenway Road for a distance of 4 metres north-west.

Schedule 4

Ferntree Drive on its east side from a point 5 metres south of its junction with Meadowlark Close for a distance of 26 metres south.



COPYRIGHT OF THE CITY AND COUNTY OF CARDIFF. ALL RIGHTS RESERVED.

DRAWING CAN BE SCALED FOR PLANNING APPLICATION PURPOSES ONLY.

© Crown copyright and database rights (2020) Ordnance Survey 100023376.
 © Hawflprint y Goron a hawliau cronfa ddata (2020) Arolwg Ordans 100023376.

DESIGN CONTRACTS AND DELIVERY
 DYLLUNIO CONTRACTAU A DARPARU

Andrew Gregory
 DIRECTOR FOR PLANNING, TRANSPORT AND ENVIRONMENT
 CYLLUNIO, TRAFNIATH A'R AMGYLCHEDD

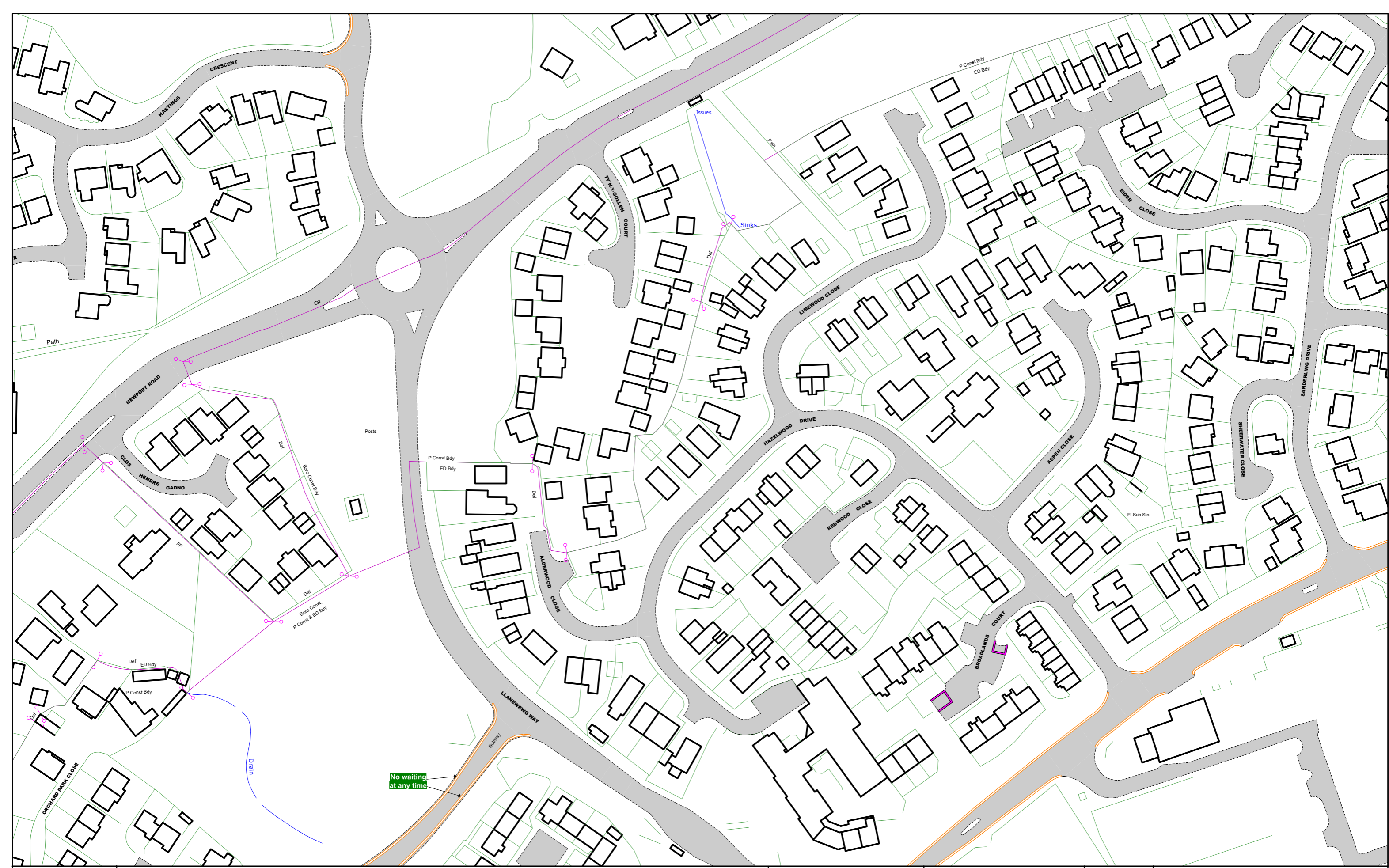
Rev	By	Date	Description of Amendment	Chk by	Date

Oakfield Primary School Surround Area
 Traffic Regulation Order

Proposal Plan for Consultation

Checked	Date	Path	Project Number	Drawing Number

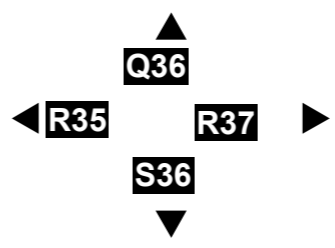
County Hall, Atlantic Wharf, Cardiff CF10 4UW
 Telephone 029 2287 2456



**THE COUNTY COUNCIL OF THE CITY AND COUNTY OF CARDIFF
(PROHIBITIONS AND RESTRICTIONS OF STOPPING, WAITING, LOADING
AND STREET PARKING PLACES) (CONSOLIDATION) ORDER 2023**

NOTE: SEE MAP SCHEDULE LEGEND FOR RESTRICTIONS DISPLAYED

This map is reproduced from Ordnance Survey material with the permission of Ordnance Survey on behalf of the Controller of Her Majesty's Stationery Office © Crown Copyright. Unauthorised reproduction infringes Crown copyright and may lead to prosecution or civil proceedings. Cardiff County Licence No: AC0000816513 2024



SCALE	1 : 1250	@ A3
DATE		
MAP	Tile Ref: R36	
REVISION	DRAFT	

